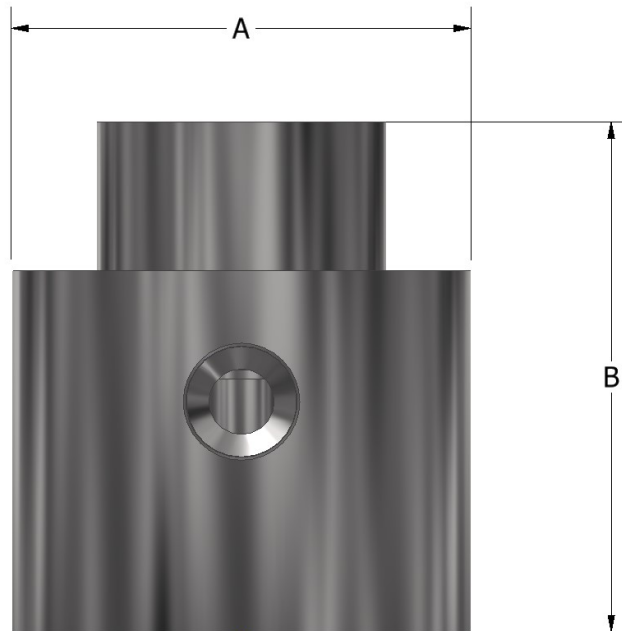


OPERATION

The Ruelco Low Pressure Fuse Valve is a 2-way, bleed temperature control valve used for production control and safety systems. It functions as a normally closed, fire protection valve in system with pressures as high as 500 psi. When the specific eutectic temperature is reached, the spool will shift upward and quickly vent the pressure in the pneumatic or hydraulic control circuit. The threaded vent port allows for the capture of this fluid to prevent further damage to the environment.

FEATURES

- 316 Stainless steel construction
- 1/4" NPT port connections
- High temperature Fluorocarbon seals
- Large Cv factor assures fast system response
- Small compact design



DIMENSIONS

A	1.75" (50.8 mm)
B	2.00" (44.45 mm)
PORTS	1/4" FNPT
WEIGHT	1.01 LBS (.46 KG)

PHONE: 504-340-0055
FAX: 504-340-0056
EMAIL: SALES@RUELCO.COM

1209 DISTRIBUTORS ROW
NEW ORLEANS, LA 70123

LOW PRESSURE FUSE VALVE



Proudly Distributed By

TRIDENT AUSTRALIA
FLUID SYSTEMS & COMPONENTS

PARTS LIST

ITEM	QUANTITY	DESCRIPTION	MATERIAL
1	1	SNAP RING	ST. STL.
2	1	RETAINER	316 ST. STL.
3	1	TEMPERATURE EUTECTIC	EUTECTIC
4	1	SPOOL	316 ST. STL.
5	1	SPOOL SEAL	FLUOROCARBON
6	1	PISTON SEAL	FLUOROCARBON
7	1	BODY	316 ST. STL.

* INDICATES ITEMS IN THE REPAIR KIT

SPECIFICATIONS

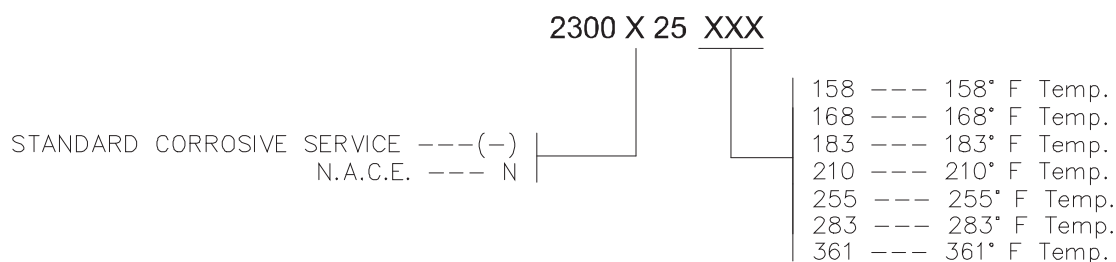
MAXIMUM WORKING PRESSURE	500 PSI (8.27 BAR)
AMBIENT TEMPERATURE RANGE	-20 TO 375° F -29 TO 190° C
Cv FACTOR	.75

REPAIR KIT

- 23-005-XXX (SPECIFIES TEMPERATURE RANGE)

OTHER TEMPERATURE RANGES AND SEAL COMPOUNDS AVAILABLE UPON REQUEST

ORDERING CODE



LOW PRESSURE FUSE VALVE

PHONE: 504-340-0055
FAX: 504-340-0056
EMAIL: SALES@RUELCO.COM

1209 DISTRIBUTORS ROW
NEW ORLEANS, LA 70123



Proudly Distributed By

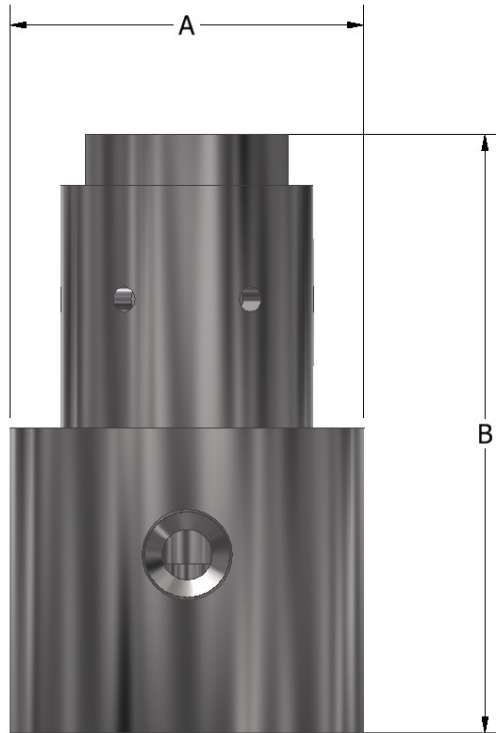
TRIDENT AUSTRALIA
FLUID SYSTEMS & COMPONENTS

OPERATION

The Ruelco High Pressure Fuse Valve is a 2-way, bleed temperature control valve used for production control and safety systems. It functions as a normally closed, fire protection valve in system with pressures as high as 10,000 psi. When the specific eutectic temperature is reached, the spool will shift upward and quickly vent the pressure in the pneumatic or hydraulic control circuit. The threaded vent port allows for the capture of this fluid to prevent further damage to the environment.

FEATURES

- 316 Stainless steel construction
- 1/4" NPT port connections
- High temperature Fluorocarbon seals
- Large Cv factor assures fast system response
- Small compact design



HIGH PRESSURE FUSE VALVE

DIMENSIONS

A	1.75" (50.8 mm)
B	3.00" (76.2 mm)
PORTS	1/4" FNPT
WEIGHT	1.75 LBS (.80 KG)

PHONE: 504-340-0055
FAX: 504-340-0056
EMAIL: SALES@RUELCO.COM

1209 DISTRIBUTORS ROW
NEW ORLEANS, LA 70123



Proudly Distributed By

TRIDENT AUSTRALIA
FLUID SYSTEMS & COMPONENTS

PARTS LIST

ITEM	QUANTITY	DESCRIPTION	MATERIAL
1	1	CAP	316 ST. STL.
2	1	BALLS	316 ST. STL.
3	1	EUTECTIC	EUTECTIC
4	1	SPOOL	316 ST. STL.
5	1	SPOOL SEAL	FLUOROCARBON
6	1	PISTON SEAL	FLUOROCARBON
7	1	PISTON BACKUP	TEFLON
8	1	BODY	316 ST. STL.

* INDICATES ITEMS IN THE REPAIR KIT

SPECIFICATIONS

MAXIMUM WORKING PRESSURE	10,000 PSI (690 BAR)
AMBIENT TEMPERATURE RANGE	-20 TO 375° F -29 TO 190° C
Cv FACTOR	.75

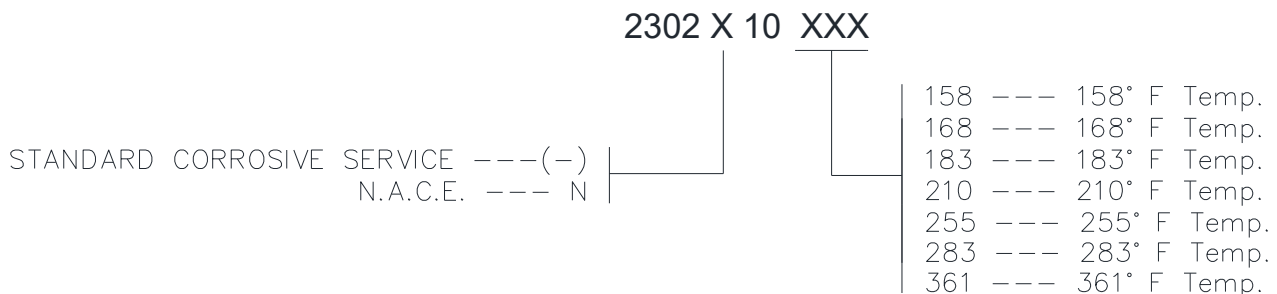
REPAIR KIT

- 23-104-XXX (SPECIFIES TEMPERATURE RANGE)

OTHER TEMPERATURE RANGES AND SEAL COMPOUNDS AVAILABLE UPON REQUEST

HIGH PRESSURE FUSE VALVE

ORDERING CODE



PHONE: 504-340-0055
FAX: 504-340-0056
EMAIL: SALES@RUELCO.COM

1209 DISTRIBUTORS ROW
NEW ORLEANS, LA 70123